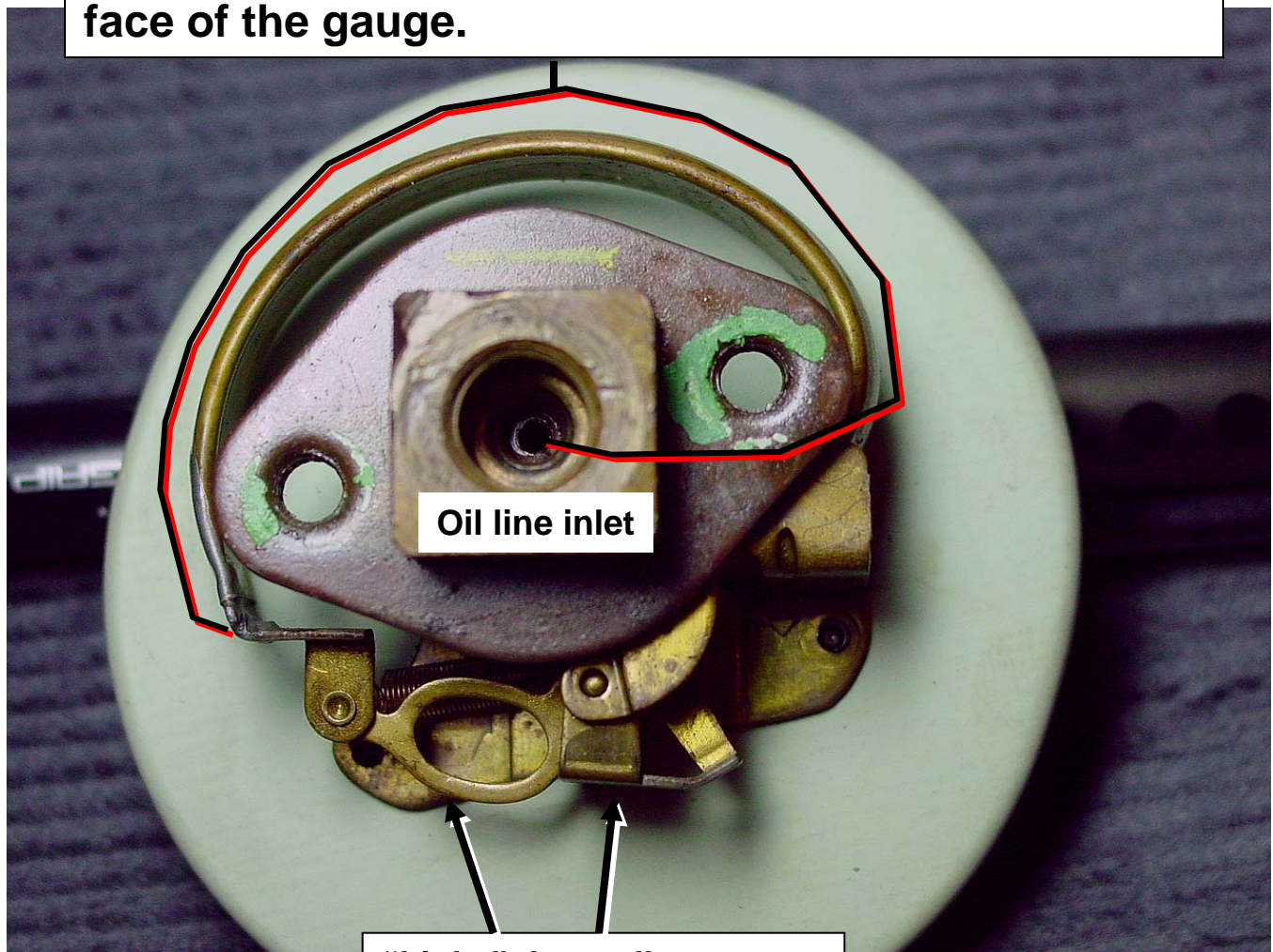


The workings of the mid-year oil pressure gauge.

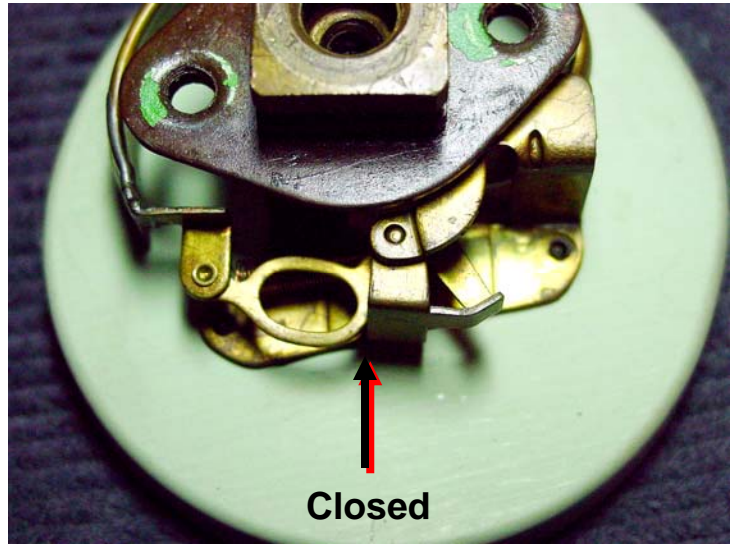
Brass expansion tube that “uncoils” under pressure load pulling the links at the bottom apart to rotate the needle to the right as viewed from the face of the gauge.



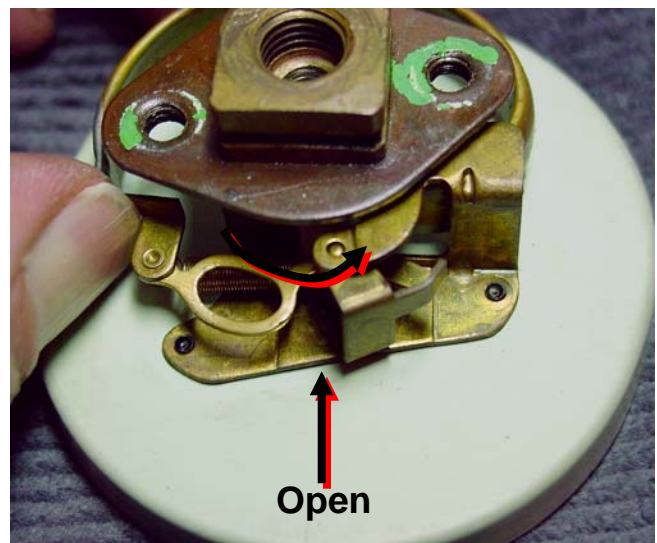
Oil line inlet

“Links” that pull apart to cause the needle rotation

Note: This is an 80-lb gauge that came out of my 1965.
Dave Zuberer



With gauge at 0 psi the links at the bottom are closed.



With pressure delivered to the brass expansion tube (shown here at about 40 psi) the links at the bottom are pulled open and the needle pivots to the right.

